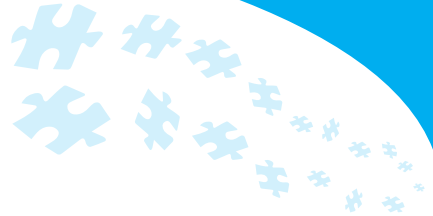


AWARD WINNING PROGRAM

serving children and families since 1993

PUZZLE'S ACADEMY

CHILD DEVELOPMENT CENTER



Licensed Child Care Services
Cutting Edge Concept
Stimulating Learning Environment
Experienced Qualified Staff



After attending the NAEYCE Convention on early childhood education in 2011, Tim and Kim Stevenson set out to create a unique learning system that facilitates increased physical activity and play to develop the whole child including teaching important “soft skills.” They began to construct and introduce the Explorative Play Learning System with their own center.

It was an impressive standing ovation from 20,000 leading educators after Paley said...

“It’s time to get government out of the classroom and put **PLAY** back into the preschool.”



PUZZLED about your childcare options? We can **HELP!**

Are you looking for a reputable, state-certified child development program?

Are you comfortable with your current childcare program?

Is your child getting everything he or she needs at this critical time of development?

Sometimes change is difficult...but it usually results in great improvement!

The Puzzle’s Academy program was developed by our FAMILY for your FAMILY!

Our program addresses the concerns that parents have with traditional childcare...

When choosing a quality program for your child, consider this:

How do you teach a child to think outside the box while spending all day in a box!

Creativity, play, and discovery are crucial to early childhood development. The environment and learning atmosphere must be a stimulating experience that allows your child the opportunity to develop emotionally, physically, and socially.

100% of our parents stated in a recent survey they would recommend Puzzle’s Academy to other parents.

100% strongly agree that their child has benefited from the unique environment at Puzzle’s Academy

Mission Statement

Puzzle's Academy is committed to providing a wonderful experience for your child. We seek to serve your family by providing solutions to your busy life. Our mission is to establish a positive working relationship with your family and to create a trusting bond with your child. Your children...Our children, will be cared for and developed by an enthusiastic, experienced and caring staff. Our programs and curriculum exceeds and compliments the Kentucky Early Childhood Standards and Kindergarten Preparedness. Our success will be measured by the daily experiences that we share with your children.

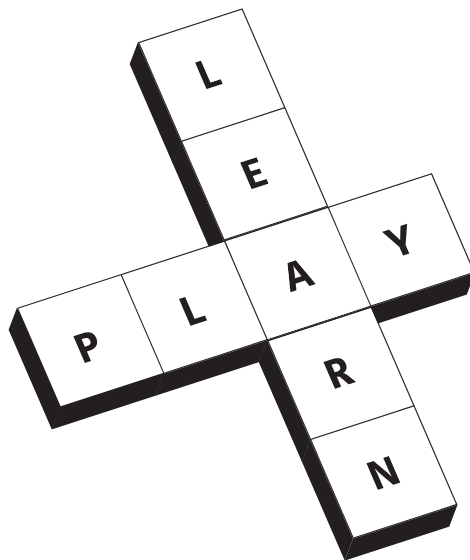


- *Proud recipient of 2017 Kentucky Woman Owned Business of the Year for innovation in business for the “edu-tainment” concept*
- *Proud Recipient of a 2011 Pacesetter Award*
- *2017 4 Star Rating from Kentucky All Stars Quality Program*

History - Puzzle's Philosophy

Tim and Kim Stevenson began observing that as children were required to sit for longer periods of time, attention decreased and behavior concerns increased. Children were presented with academic skills but could not retain these skills. However, when children were provided with longer times of both structured and unstructured active play, they were able to focus more during direct instruction. Increased physical activity appeared to help children learn more in less time, in addition to developing behaviors (i.e. cooperation, communication, compliance) necessary for future educational success. This is when the Stevensons became determined to place play and exploration as one of the highest priorities within Puzzle's Academy.

This was even more solidified after attending a NAEYCE conference in 2011 and listening to a legend of education Vivian Gussin Paley teacher, researcher, author, and Macarthur Fellowship recipient. Paley's message indicated that due to the need to meet developmentally inappropriate academic standards this caused childcare centers and schools to replace toys with pencil and paper which has stifled the social and creative growth of preschool children leading to greater levels of anxiety and sensory disorders among children. With the push to teach academic skills, children are missing out on the soft skills that are necessary for lifelong success. The attainment of soft skills are those skills that are used when effectively interacting with others, handling frustration, thinking creatively, regulating emotion and sustaining attention. Research indicates that when students have these skills they are able to learn at higher rates as they are able to focus on the instruction in the classroom.





PLAY
is the highest form
of research
-Albert Einstein

Research

This learning system was derived from the work of multiple well established theorists and researchers including Jean Piaget, David Ausubel, Vivian Paley and as well as recommendations made by the American Academy of Pediatrics.

Explorative Play Learning System

The Explorative Play Learning system provides children with opportunities through structured and unstructured play activities to develop cognitive and social-emotional skills, communication, and increase independence by physically exploring and inquiring the environment around them. This learning system, created by Puzzle's Academy, can be seen in all aspects including center design, play areas, classroom designs, teacher led activities, daily schedules, and menus. Each are purposely designed to support the unique needs and development of the individual child.

Play Areas

Outside the classroom, the featured play areas are the Toddler Sensory Play-land, Imagination Zone, Pretend City, Creation Station, Adventure Playground, and the Outdoor Activity Zone. In these areas, students will be able to engage in child directed play. While all the play areas provide increased opportunities for learning through explorative play, physical activity, and stimulation, there are unique attributes to each one.

So Many Reasons To Choose Puzzles





So Many Reasons to Choose Puzzles

Infant and Toddler Programs

The children in our infant program benefit from an experienced, caring and nurturing staff, individual schedules, and a small group size. According to developmentally appropriate practices, we respect and follow each child's individual daily schedule for eating, sleeping, diaper changes, active playing, and exploring, singing, and social activities.

The toddler programs provide an active, hands-on learning experience for children ages 12-24 months. Children are introduced to various activities that will promote their mental, physical, and emotional development.

Preschool

Our bright classrooms and large playgrounds create an atmosphere for learning where preschoolers engage in age-appropriate activities related to a weekly theme and curriculum developed by our Kentucky certified teacher. The classroom offers learning centers for math, science, dramatic play, creative art and a library that are filled each week with theme related materials to engage



children at each stage of their development.

In addition to the learning environment in the classroom, Puzzle's Academy also provides opportunities for the children to see the world around us by scheduling visi-

tors from community helpers throughout the year, as well as tasking field trips to local farms, museums, theatrical performances and the zoo.



Pre-Kindergarten

Puzzle's Academy Pre-Kindergarten program provides children with the necessary tools to be successful learners not only in Kindergarten but for many years to come. This classroom features a mix of teacher and child directed activities based on weekly themes and curriculum. Our Kentucky certified teacher prepares lesson plans to suit your individual child's needs. All lesson plans include group math and language activities while incorporating Spanish and American Sign Language. Children are always encouraged to progress at their own pace.

School Age Programs

The Puzzle's Academy experience is a new concept in After-School Programs. Puzzle's places importance on the educational needs of your child while motivating them through our varied attractions.

Whether it is help with a homework question or just a healthy snack, our experience as a state-licensed childcare facility and Child Development Center should allow you to feel comfortable that your child will have the support they need during their time in the program.

Play Based Learning Model

The Toddler Sensory Play-land (13 - 24 months) is specifically designed for younger students. This play area is constructed of soft equipment to maintain the safety of children who are still developing adequate gross motor skills. Not only will students continue to develop strength, stability, and balance in the Toddler Sensory Play-land but also will learn through the engagement of the senses, body, and mind.

The Imagination Zone and Pretend City (3 - 12 years) is housed indoors and includes multiple inflatable play structures. The inflatables incorporate kid friendly themes to engage students in fun and imaginative activities. While students are preoccupied with having fun and interacting with peers in this play area, they are practicing skills to improve gross motor development.

The Creation Station (2 - 12) comprises of an enormous light-bright. In this play area, students will exercise creative thinking, problem solving, visual-spatial thinking, and practice fine motor skills.



The Adventure Playground (3 - 12 years) indoor structure includes slides, tubes, and climbing components. Children will develop gross motor skills, physical strength, and flexibility as they play. In addition, they will practice social skills like waiting turns, pretend play, and cooperation with the other peers.



The Outdoor Activity Zone (3 - 7 years) includes climbing structures, a merry-go-round, see-saws, playhouses and other outdoor activities. Students are also provided with outdoor toys to enhance their play and creativity in this area. The Outdoor Activity Zone facilitates the opportunities for students to play in groups, imagination, peer interaction, problem-solving, practice physical fitness, and develop independence. Since this area is located outdoors, students are able to get a breath of fresh air, discuss weather, and stimulate the brain.

Classroom Design



Classroom designs are based on the specific developmental needs of the student age group. For infant classrooms, rooms are set up to support appropriate sleep and encourage attachment between child and classroom teacher. In addition, the environment is calming to increase feelings of security. Healthy brain development for infants require sleep, attachment, and security. As students grow, their daily needs change and increased opportunities for play and movement are incorporated in the actual classroom setup. Classroom designs allow for students to move fluidly in the room to support exploration. Toddler and preschool classrooms incorporate play centers to develop imagination, problem solving, and social skills. Additionally, these classrooms include space for structured learning activities to prepare students for kindergarten readiness.



Teacher Role within Puzzle's Learning System

The teachers at Puzzle's Academy create lessons that are designed to support the achievement of developmental milestones that are specific to each student. The lessons are based on the Explorative Learning System which utilizes both child directed exploration and teacher structured learning formats to facilitate growth in social emotional functioning, cognitive and physical development, communication, and independent skills.

Teacher directed explorative instruction utilizes multi-modal learning strategies (i.e. visual, aural, and kinesthetic) to teach skills. Using multi-modal strategies not only allows for increased student attainment of skills but provokes the curiosity in children to maintain student attention. Puzzle's Academy teachers create lesson plans to address the growth of student cognition, social-emotional, motor skills and communication.

Activity and instruction is tailored to meet the needs of the students in the class. However, all children are exposed to social-emotional learning activities and school readiness skills (colors, shapes, alphabet, and numbers). Children will not learn just through passively sitting and completing activities but rather through movement, song, role-play, art, reading, and other formats.

Child directed explorative learning is built within the daily schedule. The child is able to freely explore their environment and play space through both creative and imaginative play.



Why Us?



1. Play Based Learning Model

Innovative and emerging curriculum based on latest research and recommendations made by the American academy of pediatric and influenced by work from well established theorist, Jean Piaget.



2. 300% More Physical Activity

Physical activity is necessary to develop gross motor skills, social-emotional and cognitive abilities. Physical exercise has been shown to be associated with increased memory, attention and brain growth.



3. Affordable for Working Class

Puzzle's seeks to be the best "Quality Childcare" on par with Elite preschools yet affordable for working class families. At Puzzle's we welcome Foster care and State childcare subsidies and have a very diverse group of families seeking the best for their children

Contact Us

Give us a call for more information on enrolling your child today at Puzzle's Academy or If you have an interest in owning your own Puzzle's Franchise.

Puzzle's Academy Child Development Center

11530 Bluegrass Parkway

Louisville, KY 40299

502-261-7144

or

visit us at puzzles.academy and facebook.com/puzzlesacademychildcare